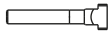



Artikelgruppe 1330

Spanneisen mit Stützgewinde

Straight Clamp with Support Hole

Referenz-Nr. Order No.	L	b1	 Gewinde metric		a	b2	b3	e1	e2	d	 (g)
			Zollgewinde whitworth								
1330-06050	50	6,6	M6	1/4	10	20	8	10	20	M8	50
1330-08060	60	9	M8	5/16	12	25	10	13	22	M8	105
1330-10080	80	11	M10	3/8	15	30	12	15	30	M10	210
1330-12100	100	14.5	M12-M14	1/2	20	40	14	21	40	M12	465
1330-12125	125							21	50		590
1330-16125	125	18.5	M16-M18	5/8	25	50	18	26	45	M16	930
1330-16160	160							65	1200		
1330-20160	160	22.5	M20-M22	3/4	30	60	22		60	M20	1710
1330-20200	200				30	60	22	30	80		2170
1330-20250	250				35	70	30		100		3885
1330-24160	160	26	M24	1	30	70	26		60	M24	1965
1330-24200	200				35	70	26		80		2920
1330-24250	250				35	70	26	35	100		3720
1330-24315	315				40	80	35		100		6435
1330-30250	250				33	M30	11/4	40			
1330-30315	315	50	80	34				45	130	7665	
1330-36400	400	43	M36-M42	11/2	58	100	43	100	150	M30	14490

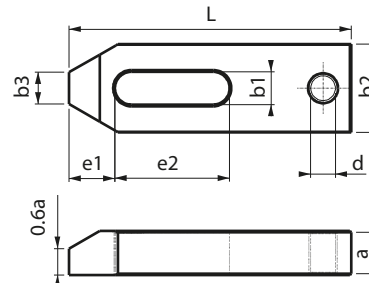


1330

- Gehärtet
- Schwarz beschichtet

1330


- Hardened
- Black Coating

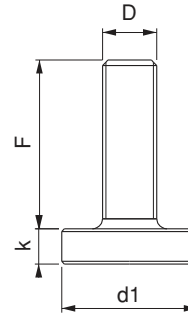


Artikelgruppe 1490

Stützschaube

Clamp Support Bolt

Referenz-Nr. Order No.	D x F	d1	k	 (g)
1490-08032	M8x32	25	8	40
1490-10042	M10x42	30	8	60
1490-12050	M12x50	36	10	110
1490-12095	M12x95	36	10	150
1490-16062	M16x62	45	13	240
1490-16097	M16x97	45	13	285
1490-16117	M16x117	45	13	310
1490-20062	M20x62	50	13	320
1490-20097	M20x97	50	13	390
1490-20117	M20x117	50	13	430
1490-24081	M24x81	50	14	445
1490-24116	M24x116	50	14	555
1490-30180	M30x180	70	24	1650



1490

- Schwarz beschichtet

1490

- Black Coating

