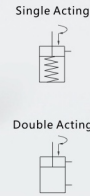
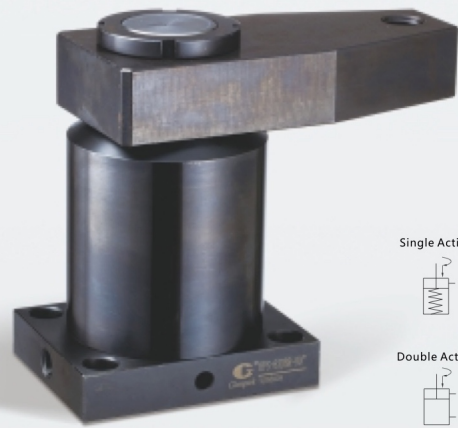


HPS

HPS HIGH PRESSURE HYDRAULIC SWING CLAMP

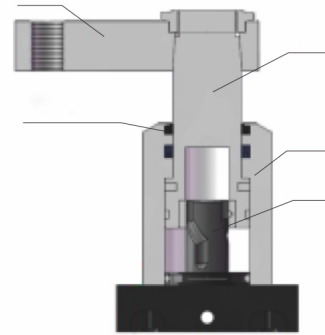


FEATURES

The clamping mechanism of the HPS series includes a swing stroke and a vertical stroke. For operational instructions, do not clamp the workpiece during the rotation. The cylinder uses high-quality oil seals and components imported directly from Germany. The smooth interior wall is processed specifically to enhance product performance and increase product lifespan. Please refer to the specification chart for the maximum fluid supply. Installation of a flow control valve is highly recommended for better control.

Max. operating pressure: 250 kgf/cm²
 Min. operating pressure: 70 kgf/cm²
 Single acting and double acting

Sectional view






NOTE

The action and the speed of clamping / unclamping needs to be slowed down appropriately.
 The length and weight of the customized clamping arm shall not exceed 1.5 times of the standard clamping arm.
 Please refer to page 4 for the rotation diagram, installation instructions and removal methods of the clamping arm.

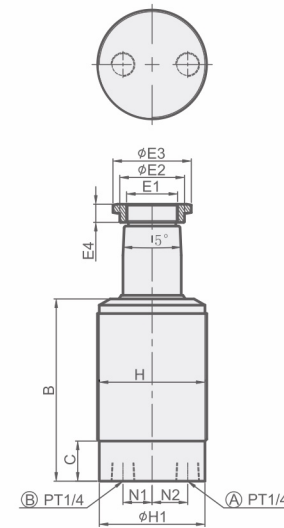
ORDERING INDICATION

HPS – 25SAR-90

HPS	Series	HPS
25	Hydraulic cylinder inside diameter	Φ25, Φ32, Φ40, Φ50, Φ63
S	Acting type	Single acting Double acting
A	Installation	A: Threaded type  B: Line type  C: Manifold type 
R	Swing direction	R: Turn right L: Turn left
90	Swing angle	Standard angle 90°(±2°) Order angle 30°(±2°), 45°(±2°), 60°(±2°)

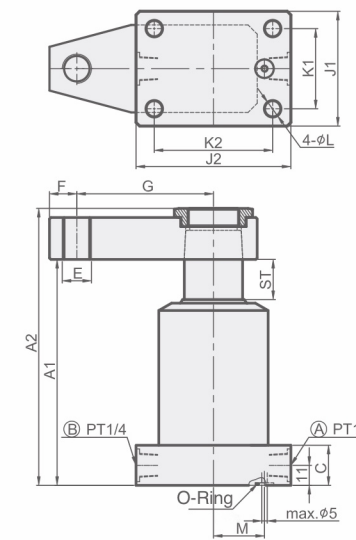
Single-Acting

THREADED TYPE



Ⓐ Clamping port

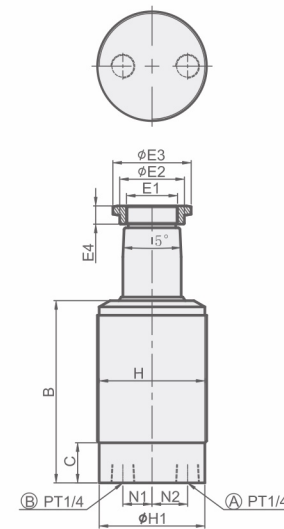
FLANGE TYPE



Ⓑ Vent port

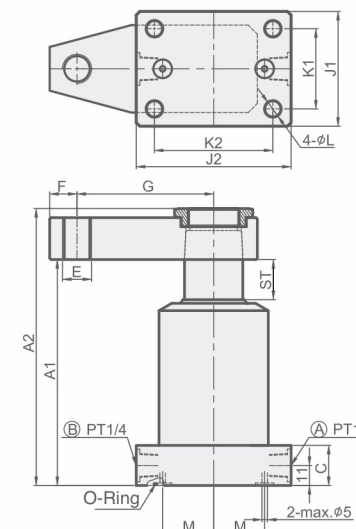
Double-Acting

THREADED TYPE



Ⓐ Clamping port

FLANGE TYPE



Ⓑ Vent port

Unit:mm

Modell	HPS-25	HPS-32	HPS-40	HPS-50	HPS-63
A1 Un-clamped	109	120.5	124	142	148
A2 Un-clamped	129	146.5	152	176	190
B	87	97	100	113	119.5
C	22	22	22	22	22
E	M10×1.5	M12×1.75	M16×2	M16×2	M20×2.5
E1	M18×1.5	M22×1.5	M28×1.5	M35×1.5	M43×1.5
ΦE2	23.5	28.5	35.5	45.5	54.5
ΦE3	27.7	33.5	43	53.1	63.5
E4	9	10	10	12	14
F	10	12	15	15	18
G	50	65	75	95	120
H	M45×1.5	M52×1.5	M60×1.5	M80×2.0	M90×2.0
ΦH1	43	50	58	78	88
J1	45	53	63	80	90
J2	65	73	85	100	115
K1	30	37	44	60	68
K2	50	57	65	80	90
ΦL	6.5	9	9	13	15
M	15	20	28	31	37.5
N1	13	14.5	16	19	25.5
N2	13	16	19.5	26.5	34
O-Ring (C type)	P7	P7	P7	P7	P9

SPECIFICATIONS

MODEL	CLAMPING FORCE AT 250 kgf/cm ² (kgf)		SWING STROKE (mm)	CLAMPING STROKE (mm)	TOTAL STROKE(mm)	CYLINDER CAPACITY CLAMP(cm ³)	CYLINDER CAPACITY UNCLAMP(cm ³)	EFFPISTON AREA CLAMP(cm ²)	EFFPISTON AREA UNCLAMP(cm ²)	RANGE OF TEMPERATURE(°C)
	Single acting	Double acting								
HPS-25	380	440	9	11	20	3.54	9.80	1.77	4.9	-10~+70°C
HPS-32	650	780	10	13	23	7.20	18.49	3.13	8.04	-10~+70°C
HPS-40	1140	1300	10	12	22	9.94	27.63	4.52	12.56	-10~+70°C
HPS-50	1580	1760	12	15	27	19.09	53.00	7.07	19.63	-10~+70°C
HPS-63	2560	2880	12	15	27	31.16	84.13	11.54	31.16	-10~+70°C